



SERIES 17 & 18 CAPACITIES • AIR/GAS S.C.F.M. at 10% Accumulation

CAPACITIES																
SET PRESSURE	5	10	20	40	50	75	100	125	150	200	300	400	500	600	700	750
9/16" Seat	19	26	37	60	71	99	126	155	181	237	348	460	571	682	793	848
3/4" Seat	28	36	51	81	96	133	171	209	240	321	471	622	773	923	1073	1148

SERIES 17 & 18 CAPACITIES • STEAM Pounds Per Hr., Saturated Steam at 10% Accumulation

CAPACITIES															
SET PRESSURE	5	10	20	30	40	50	60	75	100	125	150	200	250	300	
9/16" Seat	55	73	104	138	169	200	231	279	355	451	513	668	826	981	
3/4" Seat	80	102	144	176	228	271	313	375	482	514	694	905	1120	1328	

SERIES 17 & 18 CAPACITIES • LIQUID GPM at 25% Over Pressure

CAPACITIES																
SET PRESSURE	5	10	20	40	50	75	100	125	150	200	300	400	500	600	700	750
9/16" Seat	2.8	3.9	5.6	7.8	8.8	10.1	12.4	14.1	15.2	17.5	21.4	24.8	27.8	30.4	32.8	54
3/4" Seat	4.2	6	8.5	12	13.4	16.5	19	21.7	23.3	26.9	32.9	38	42.6	46.6	50.2	52

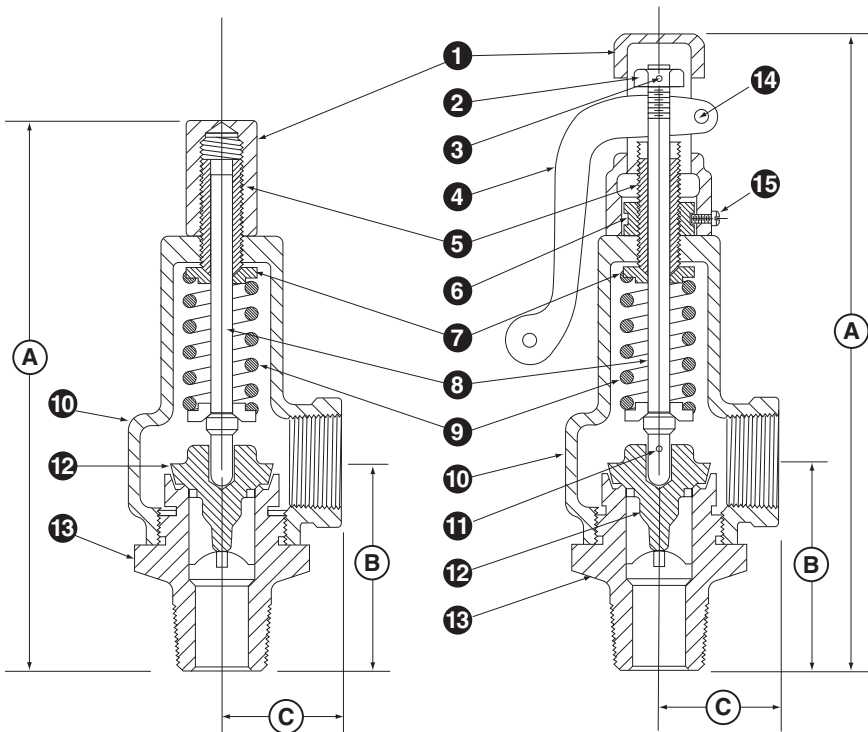
Tag Markings: All valves are clearly marked as required by the National Board.

The diagram shows a rectangular metal tag with the following markings and callouts:

- INLET SIZE:** Points to the 'SIZE IN.' field showing '2'.
- PRESSURE SETTING IN PSI:** Points to the 'P.S.I.' field showing '100'.
- CAPACITY:** Points to the 'CAP S.C.F.M.' field showing '849'.
- MANUFACTURING DATE:** Points to the 'DATE' field showing '3-04'.
- NATIONAL BOARD CERTIFIED (NB):** Points to the 'NB' logo.
- ASME SECTION VIII DIV.1 (UV):** Points to the 'UV' logo.
- SERIES NUMBER:** Points to the 'NO.' field showing '88F'.

Additional text on the tag includes: AQUATROL, INC. ELBURN, IL U.S.A.

Sample Tag Shown At 150% Of Actual Size



PARTS IDENTIFICATION & MATERIALS		
ITEM	PART NAME	MATERIAL
1	HOOD	BRASS
2	LOCK NUT	BRASS
3	COTTER PIN	STEEL
4	LIFT LEVER	BRONZE
5	PRESSURE SCREW	BRASS
6	PRESS. SCREW LOCK	BRASS
7	SPRING PLATE	BRASS
8	SPRING POST	BRASS
9	SPRING	STAINLESS STEEL
10	BONNET	BRONZE
11	POST	BRONZE
12	DISK	BRASS
13	PIN	BRASS
14	LIFT LEVER PIN	BRASS
15	LOCK SCREW	BRASS

SERIES 17 & 18 DIMENSIONS • AIR • STEAM • GAS • LIQUID

SERIES	INLET SIZE	SEATOUTLET SIZE	MAX SET PRESSURE AIR OR LIQUID STEAM	-----DIMENSIONS-----			----WEIGHT----			
				A SERIES 17	A SERIES 18	B C	SERIES 17	SERIES 18		
17-2-B OR 18-2-B	1/2"	9/16"	300	300	6 3/8"	5 3/8"	2 1/4"	1 1/8"	1 1/4	1 1/8
17-2-C OR 18-2-C	1/2"	9/16"	750	300	6 1/2"	5 7/8"	2 1/4"	1 3/8"	2	1 7/8
17-2-D OR 18-2-D	3/4"	9/16"	750	300	6 1/2"	5 7/8"	2 1/4"	1 3/8"	2	1 7/8
17-2-E OR 18-2-E	3/4"	9/16"	750	300	6 5/8"	5 7/8"	2 3/8"	1 1/2"	2 1/4	2 1/8
17-2-F OR 18-2-F	1"	9/16"	750	300	6 3/4"	5 7/8"	2 3/8"	1 1/2"	2 3/8	2 1/4
17-2-G OR 18-2-G	1"	9/16"	750	300	6 3/4"	6 5/8"	2 7/8"	2 1/8"	3	2 3/4
17-3-H OR 18-3-H	1/2"	3/4"	750	300	6 1/2"	5 7/8"	2 1/4"	1 3/8"	2	1 7/8
17-3-K OR 18-3-K	3/4"	3/4"	750	300	6 1/2"	5 7/8"	2 1/4"	1 3/8"	2	1 7/8
17-3-L OR 18-3-L	3/4"	3/4"	750	300	6 3/4"	5 7/8"	2 1/4"	1 1/2"	2 1/4	2 1/8
17-3-M OR 18-3-M	1"	3/4"	750	300	6 3/4"	5 7/8"	2 1/4"	1 1/2"	2 3/8	2 1/4
17-3-P OR 18-3-P	1"	3/4"	750	300	6 3/4"	6 5/8"	2 7/8"	2 1/8"	3	2 3/4

PLEASE SPECIFY SERIES, SIZE, SERVICE & SET PRESSURE