

Liquid Relief Valves *Non-Coded*

SIZES FROM 1/4" TO 3"
PRESSURE TO 400#
TEMPERATURES TO 450°

Series 89L is an industry standard used for liquid relief, liquid by-pass and over protection. Series 51 and 55 are generally used where size or spacing is a factor.

SERIES 89-L



SERIES 51



Series 89-L & 51

Usages:

- Liquid relief and overprotection
- By-pass relief
- Continuous relief
- Pressure regulation
- Pumping systems, tanks and hydraulics
- Fluid lines
- Oil fields and chemical processing

Features:

- Ruggedly constructed
- Metal-to-metal/precision lapped seating
- Closed hex cap
- Factory set and sealed (can also be field adjusted)
- Variety of inlet and outlet options
- Fixed blowdown

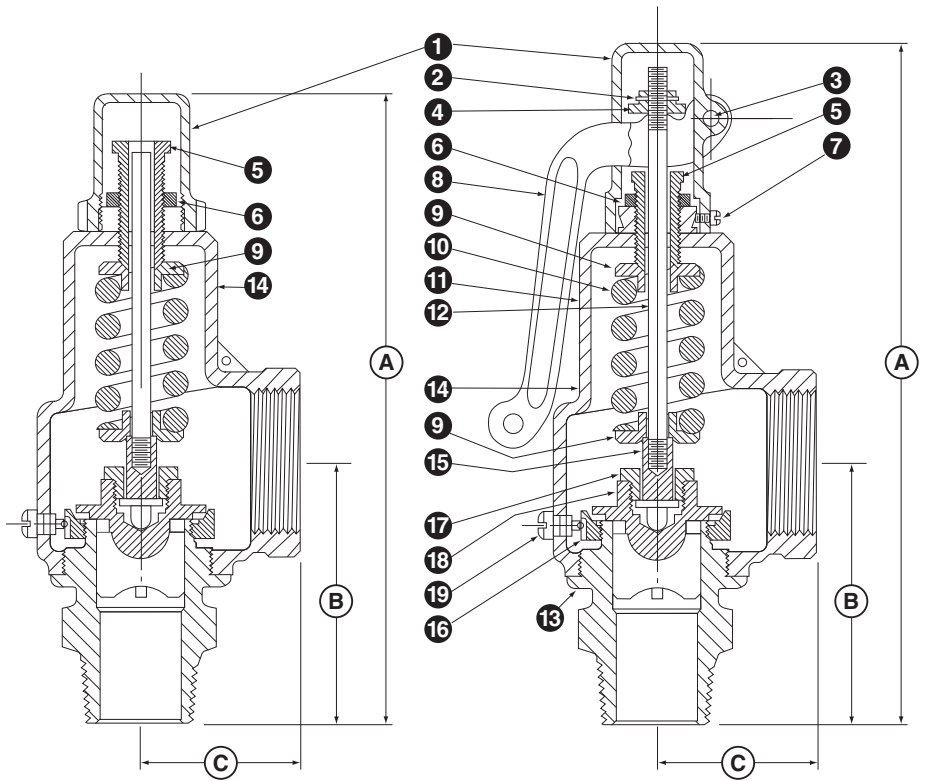
Options:

- Wheel handle for ease of field adjustments
- Variety of inlet and outlets
- Stainless steel inserts for extreme corrosion protection
- Oxygen cleaning
- Polishing and chrome plating

* PLEASE SEE CAPACITY AND SIZE CHARTS.

PARTS IDENTIFICATION & MATERIALS		
ITEM	PART NAME	MATERIAL
1	HOOD	BRONZE
2	COTTER PIN	STEEL*
3	LIFT LEVER PIN	BRASS
4	LIFTER NUT	BRASS/STEEL*
5	PRESSURE SCREW	BRASS
6	LOCK NUT	BRASS
7	HOOD SCREW	BRASS
8	LIFT LEVER	BRONZE
9	SPRING PLATE	BRASS/STEEL*
10	SPRING	STAINLESS STEEL
11	BONNET	BRASS/BRONZE
12	SPRING POST	BRASS/STEEL
13	BODY	BRASS
14	BONNET	BRASS/BRONZE
15	SPRING PLATE SUPPORT	BRASS
16	REGULATOR RING	BRASS
17	SPRING PLATE	BRASS
18	DISK	BRASS/BRONZE
19	DISK NUT RETAINER	BRASS

*STEEL PLATED



SERIES 88 & 89-L DIMENSIONS • AIR/GAS/STEAM/LIQUID									
VALVE SIZE	SEAT SIZE	OUTLET SIZE*	A		B	C	MAX. SET PRESSURE AIR/GAS/STEAM	WEIGHT SERIES 88	WEIGHT SERIES 89
			SERIES 88	SERIES 89					
1/2"	A-1/2"	3/4"	6 1/2"	5 7/8"	2 1/8"	1 3/8"	250	2	1 1/2
3/4"	B-3/4"	1"	6 7/8"	6"	2 3/8"	1 3/8"	250	2 1/2	2
1"	C-1"	1 1/4"	7 1/2"	7 1/2"	5 5/8"	1 7/8"	250	3 3/8	3
1 1/4"	D-1 1/4"	1 1/2"	8 1/2"	8 1/2"	3 1/4"	2"	250	4 5/8	4 1/2
1 1/2"	E-1 1/2"	2"	9 3/4"	9 3/4"	3 1/2"	2 1/2"	250	7	6 1/2
2"	F-2"	2 1/2"	11 1/8"	11 1/8"	4"	2 5/8"	250	10 1/8	9 1/4
*2 1/2"	G-2 1/2"	3"	13 1/4"	12"	4 3/4"	3 1/8"	250	22 1/4	21
*3"	H-3"	3"	15"	13 1/2"	5 1/8"	4 3/8"	250	22 1/4	21

CAPACITY STATED FOR SEAT SIZE

*2 1/2" & 3" ORIFICE-NOT ASME, NB.

*VARIATIONS OF INLET & OUTLET SIZES AVAILABLE.

PLEASE SPECIFY SERIES, SIZE, SERVICE AND SET PRESSURE.



SERIES 89-L CAPACITIES Water Capacity in Gallons Per Minute (GPM) at 25% Over Pressure

SIZES: 1/2"-3"		CAPACITIES / SEAT SIZE						
SET PRESSURE	1/2"	3/4"	1"	1 1/4"	1 1/2"	2"	2 1/2"	3"
5	3.9	7.7	12	17	22	33	44	55
10	5.6	8.1	17	24	31	46	62	78
15	6.8	13	21	29	38	56	76	95
20	7.9	15	24	34	44	65	88	111
25	8.8	17	27	38	49	73	98	124
30	9.7	19	29	41	53	80	107	136
40	11	22	34	48	62	92	124	157
50	12	24	38	53	69	103	139	175
60	13	26	42	58	75	112	151	190
75	15	30	47	65	85	126	170	214
100	18	34	54	76	98	146	196	248
125	20	38	60	85	109	163	219	277
150	22	42	66	93	120	178	240	303
175	23	45	71	100	129	193	259	328
200	25	48	76	107	138	206	277	350
225	26	51	80	113	146	218	293	371
250	28	54	85	120	154	230	310	392
275	29	56	89	125	161	241	325	410
300	31	59	93	131	169	252	340	429
325	32	61	97	136	176	262		
350	33	64	101	141	183	272		
375	34	66	104	146	189	281		
400	35	68	108	151	195	291		

SERIES 51 & 55 CAPACITIES Water Capacity in Gallons Per Minute (GPM) at 25% Over Pressure

SIZES: 1/4"-3/8"-1/2"													
SET PRESSURE	10	20	30	40	50	75	100	150	200	300	400	500	750
	3.3	4.7	5.7	6.6	7.4	9.1	10.5	12.7	14.6	17.8	20.6	23	28.2