

FLAME Arrestors

A U S T R A L I A

(A Division of Pressure Systems Pty Ltd)

KSBG & KSGS Type Pressure Vacuum Valves

Pressure Vacuum Relief Valve With Pipe Away



The models KSBG and KSGS pressure vacuum valves are an advanced design for pipe away applications.

Designed manufactured and tested according to the API 2000 code, these valves utilize the latest technologies to provide protection against positive or vacuum over pressure and prevent air intake, evaporative losses of product and help to contain odorous and potentially explosive vapours.

These pressure vacuum valves maintain a tight seal until system pressure or vacuum exceeds the set pressure.

The valves allow an intake of air under constant pressure during emptying, or discharge excessive over pressure during filling of the tanks.

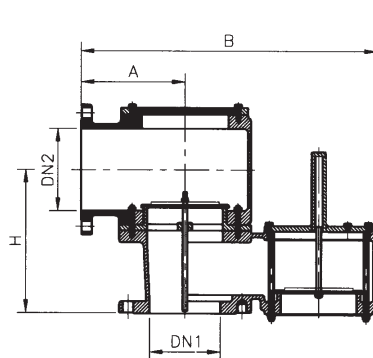
The KSBG model is a weighted pallet model designed to handle pressure and vacuum with a minimum pressure of +/- 22mm WC and a maximum setting of +/- 700mm WC.

The KSGS is a spring loaded model designed to handle pressure and vacuum with a minimum pressure of +/- 700mm WC and a maximum setting of +/- 6500mm WC.

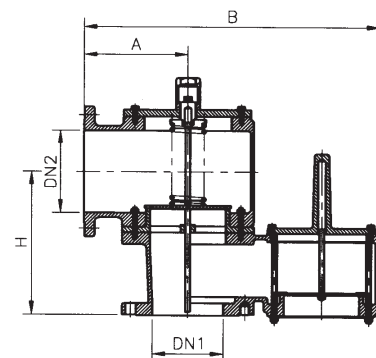
High strength, one-body castings provide added structural integrity and durability.

Body materials are available in Aluminium, Carbon Steel, 304ss and 316ss with various trims to suit individual requirements.

Sizes range from 50mm through to 250mm with ANSI 150lb FF flanges as standard (different connections available on request).



KSBG Type



KSGS Type

PO Box 154, 3/30-32 Peninsula Blvd, Seaford 3198

Phone: 03 9776 9477 Fax: 03 9776 9606

Email: pressure@ozemail.com.au www.pressuresystems.com.au

KSBG & KSGS Type Pressure Vacuum Valves

Setting Range

	KSBG Type		KSGS Type	
	MIN.	MAX.	MIN.	MAX.
Set Pressure	22mm W.C	700mm W.C	700mm W.C	6,500mm W.C
Set Vacuum	22mm W.C	700mm W.C	700mm W.C	6,500mm W.C

Dimension Table

Size	2" x 3"	3" x 4"	4" x 6"	6" x 8"	8" x 10"	10" x 12"
DN 1	50	80	100	150	200	250
DN 2	80	100	150	200	250	300
A	130	170	180	220	275	350
B	371	487	505	626	779	839
H	190	213	249	306	360	434

Standard connection: ANSI 150lb FF flange. JIS or different sizes available on request.

Materials of Construction

Item No.	Component	Body Trim	Aluminium	C.S	304 S.S	316 S.S
			304 S.S	304 S.S	304 S.S	316 S.S
1	Body		Aluminium	C.S	304 S.S	316 S.S
2	Seat		304 S.S	304 S.S	304 S.S	316 S.S
3	Vacuum Guide Post		304 S.S	304 S.S	304 S.S	316 S.S
4	Pressure Guide Post		304 S.S	304 S.S	304 S.S	316 S.S
5	Vacuum Screen		304 S.S	304 S.S	304 S.S	316 S.S
6	Pressure Screen		304 S.S	304 S.S	304 S.S	316 S.S
7	Cover Gasket		Teflon			
8	Cover		Aluminium	C.S	304 S.S	316 S.S
9	Hood		Aluminium	Aluminium	304 S.S	304 S.S
10	Stud Bolt/Nut		304 S.S	304 S.S	304 S.S	316 S.S
11	Cap Nut		304 S.S	304 S.S	304 S.S	316 S.S
12	Washer		304 S.S	304 S.S	304 S.S	316 S.S
13	Pallet Assembly		304 S.S	304 S.S	304 S.S	316 S.S
	Pallet Insert		Teflon			
	Pallet Weight		Lead			
14	Stem Guide		304 S.S	304 S.S	304 S.S	316 S.S