

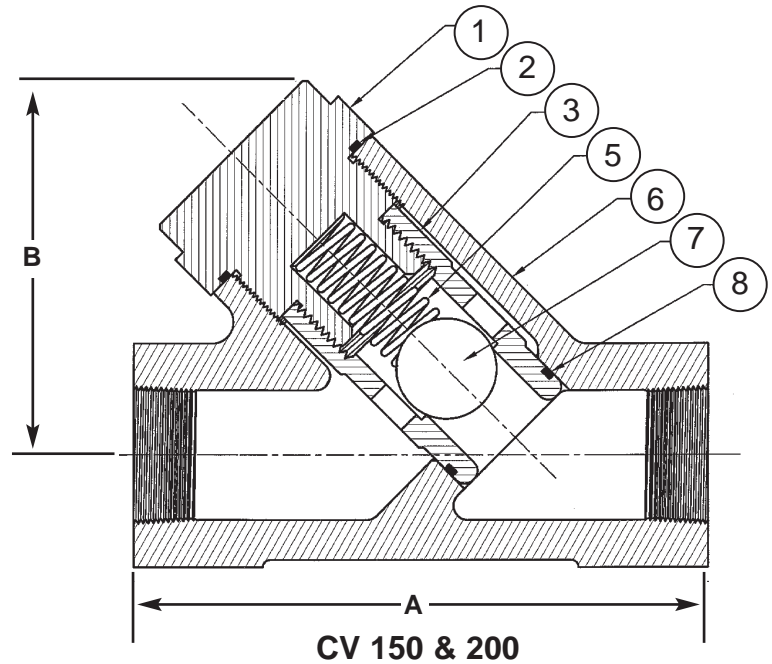
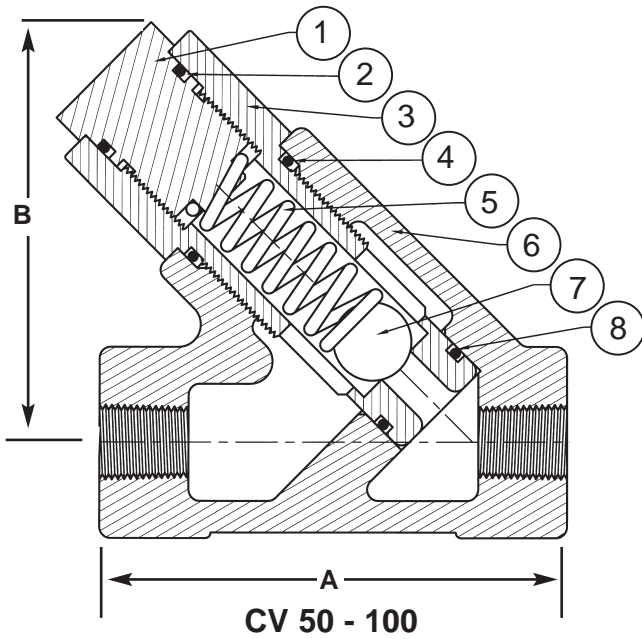
High Pressure Ball Check Valves

- Easy service cartridge barrel design
- Pressures to 3,000 psi
- Severe service option
- Operating temperatures to 450°F
- 1/2" - 2" FNPT and socket weld

 **Hydroseal**
Valve Company, Inc.



Model Selection



CV 50
INLET • OUTLET

0
MATERIAL

MODEL	INLET/OUTLET	MAX PRESSURE [PSIG]	DIMENSIONS		WEIGHT [Lbs]
			A	B	
CV 50	1/2" FNPT	3000	5 1/8"	4 7/8"	7
CV 75	3/4" FNPT	3000	5 1/8"	4 7/8"	7
CV 100	1" FNPT	3000	5 1/8"	4 7/8"	7
CV 150	1 1/2" FNPT	3000	7 1/2"	5 3/8"	21
CV 200	2" FNPT	3000	9 5/8"	6 3/4"	33

0 - Standard
3 - All 316 SS

Minimum Opening Pressure 5-7 psi

Add SW to part number for socket weld.

MATERIAL	0	3
1. CAP	4140	316 SS
2. CAP SEAL	Viton®	Viton®
3. BARREL	17-4 PH	316 SS
4. BODY SEAL*	Viton®	Viton®
5. SPRING	316 SS	316 SS
6. BODY	ASTM 487-4N	CF8M
7. BALL	440C	SS
8. BARREL SEAL	Viton®	Viton®

* NOT USED ON CV 150 & CV 200

Viton® and Kalrez® are registered trademarks of the DuPont Dow Elastomers, LLC.

CANADIAN REGISTRATION NUMBER 0C0736.2C

Hydroseal
Valve Company, Inc.

P.O. Box 1382 • Kilgore, Texas 75663-1382
903-984-8574 • Fax 903-984-6307
www.hydroseal.com

